

The Copyright of this drawing belongs to Calder Peel Partnership Ltd. and shall not be used or reproduced in any form without the express permission. The Moral right of the author is hereby asserted - Copyright © 2000.

Do not scale from this drawing - Work to figured dimensions only. All dimensions to be checked on site prior to the execution of any work.

For the avoidance of doubt all dimensions are measured to wall structure and not the finishes unless otherwise stated.

Where any discrepancy is found to exist within or between drawings and/or documents it should be reported to the architect immediately.

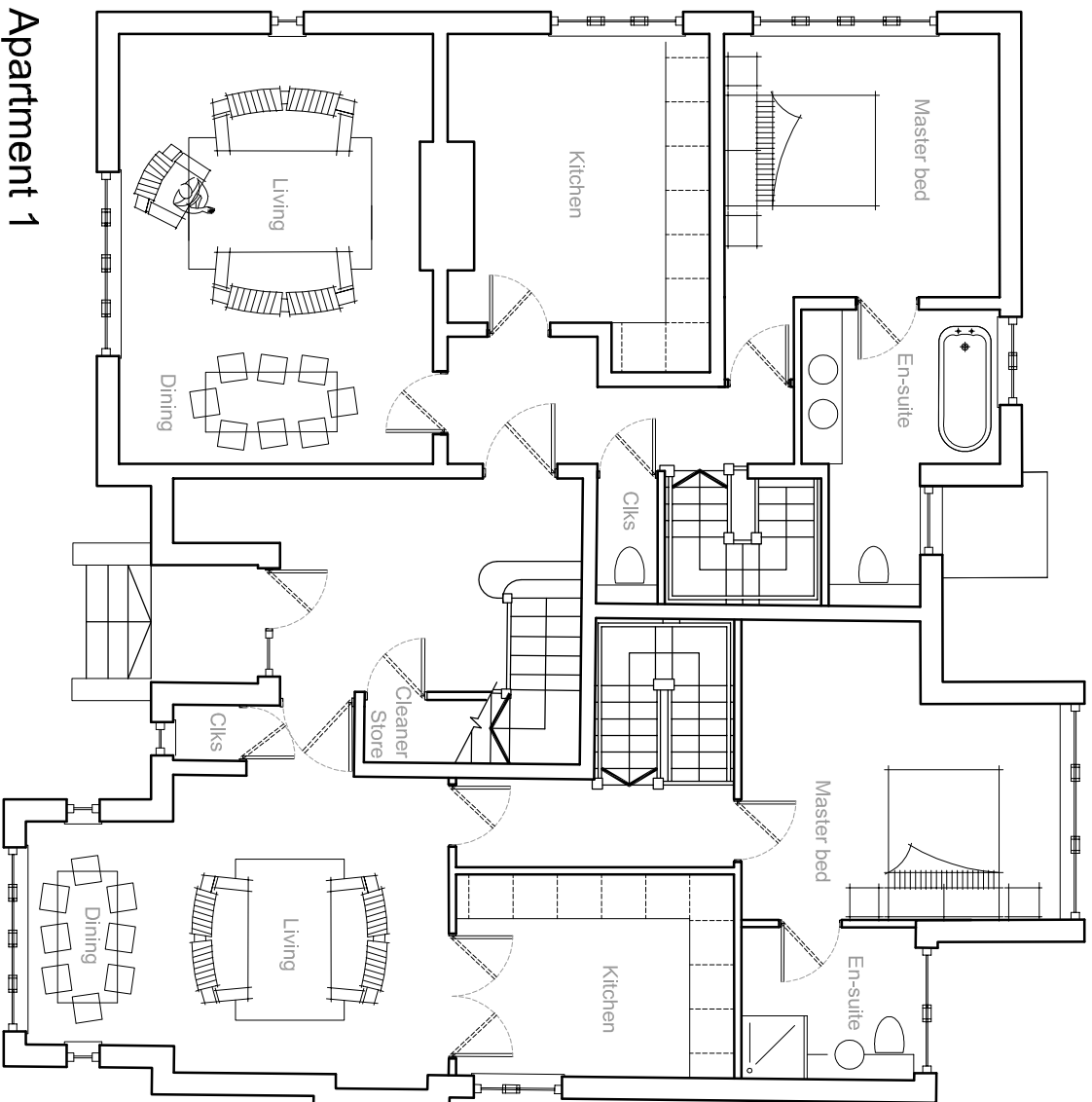
Calder Peel Partnership Ltd. shall not be liable for any use of drawings and documents for any purpose other than for which the same were prepared by or on behalf of Calder Peel Partnership Ltd.

Rev No.	Date	Drawn	Description
A	20.09.07	JAM	Conversion scheme.

Victoria and Springfield LLP.
Lynthorpe, Parkfield Road, Altrincham, WA14 2BT
Proposed Ground Floor Plan

05.04.07 SJC 1:100 @ A3

6230 (PI) 06 100 A



Apartment 1
Ground 850 sq.ft.
Lwr Ground 861 sq.ft.
Total 1711 sq.ft.

GROUND FLOOR

Apartment 2
Ground 688 sq.ft.
Lwr Ground 742 sq.ft.
Total 1430 sq.ft.